



PROGRESS
SOFTWARE



Progress **SOA Suite**
EPIC Technology Day

Copyright © 2007
Progress Software Corporation.
All rights reserved.

Under the Radar: Can Your SOA Application Really Escape Network Operations and Security Policies?

Mark Miskiman
Senior Solutions Engineer – Progress Canada
April 2008

Progress Software Overview

27

**consecutive quarters of
year over year revenue growth**

26

**Progress Software Corporation
originated.**

600,000

**Number of new users who
acquire Progress-based
technology annually**

90

Worldwide locations

Progress Software

Global Market Presence



Service-Oriented Architecture (SOA)

SOA is an architectural approach that enables the creation of loosely coupled, interoperable business services that can be easily shared within and between enterprises.

Benefits of SOA

Revenue



- New markets, channels, new value from existing systems

Flexibility



- Support flexible business models enabled by services and technology- agnostic approach

Speed



- Reuse pre-built and next generation service components for rapid deployment in response to market opportunity

Efficiency



- Integrate disparate systems from legacy, mergers / acquisitions
- Automate key business processes
- Resources working toward the same strategic IT agenda

Service



- Offer new services to customers and partners leveraging existing IT infrastructure

Cost



- Eliminate duplicate systems, build once and leverage

Risk

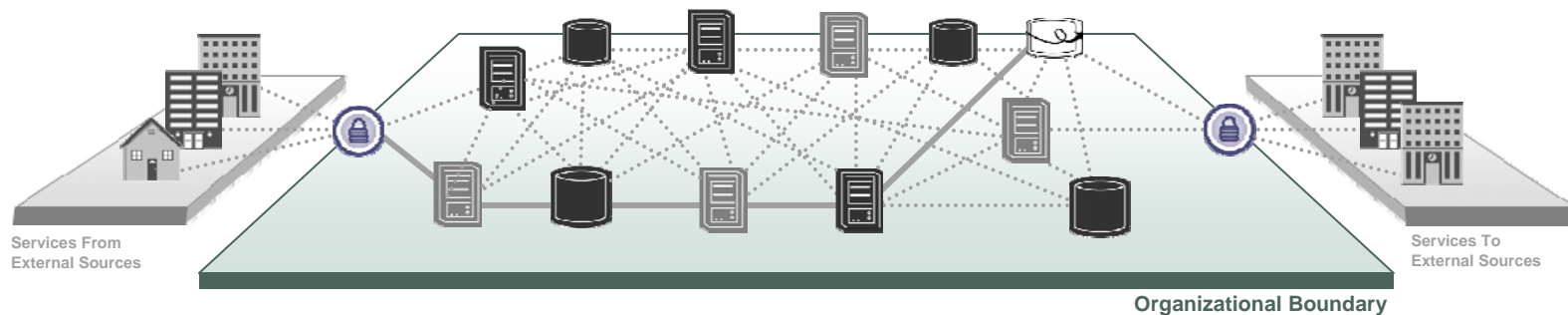


- Improve visibility into business operations

Current State - Accidental Architecture

- ❑ Expensive to maintain
- ❑ Difficult to manage
- ❑ Inflexible
 - Tightly-coupled (location & implementation aware)
 - Synchronous QoS(RPC-style, availability dependent)
- ❑ Orchestration hard-wired
- ❑ Security Ad-Hoc
- ❑ Scalability Questionable

“...blindly applying Web Services to integration is a mistake. Just because Web Services promise dramatically reduced integration costs, that doesn't mean that any arbitrary use of Web Services will achieve this effect.”...It is not sufficient to simply wrap an existing API with a Web Services interface. It is too easy (and almost lazy) to create a one-to-one mapping between system APIs and Web Services interfaces” – Zap Think LLC



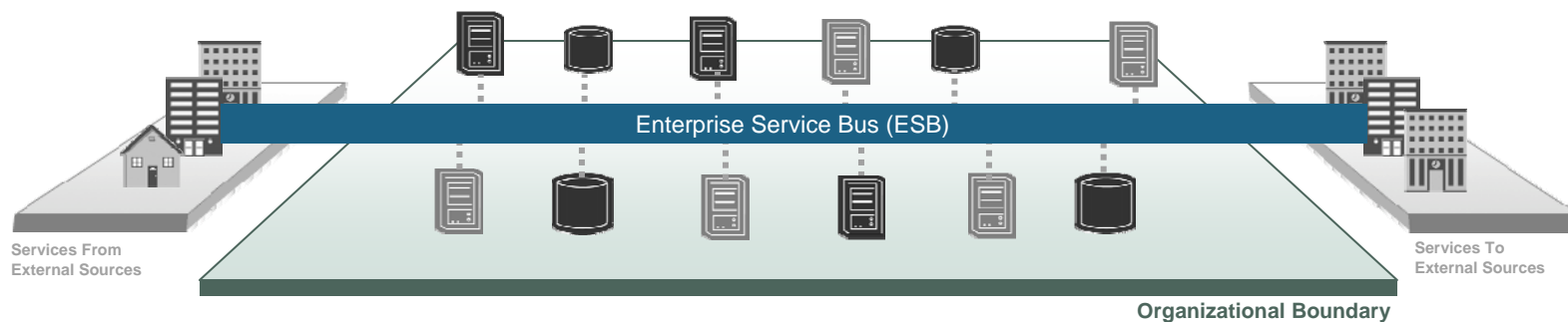
Enterprise Service Bus (ESB)

Connect – Easily connect applications, Web services and hundreds of legacy technologies. Provide robust, scalable and secure communications and seamlessly link services and processes across the extended enterprise.

Mediate – reconcile incompatible protocols, data formats and interaction patterns of connected services. Eliminate inflexible, hard-coded services interdependencies. Combine and extend existing services to meet new requirements.

Control – Dynamically deploy and upgrade hosted services. Configure business process and service mediation. Gain visibility over the entire distributed infrastructure.

“ We have all sorts of incompatible formats, applications and code. Sonic showed us how to unify and simplify by using Sonic ESB as the foundation. That translates to a better, faster, more flexible way to respond to customer needs.” – Manny Montejano (CIO) at Cole Taylor Bank



SOA – More Than Web Services and ESB

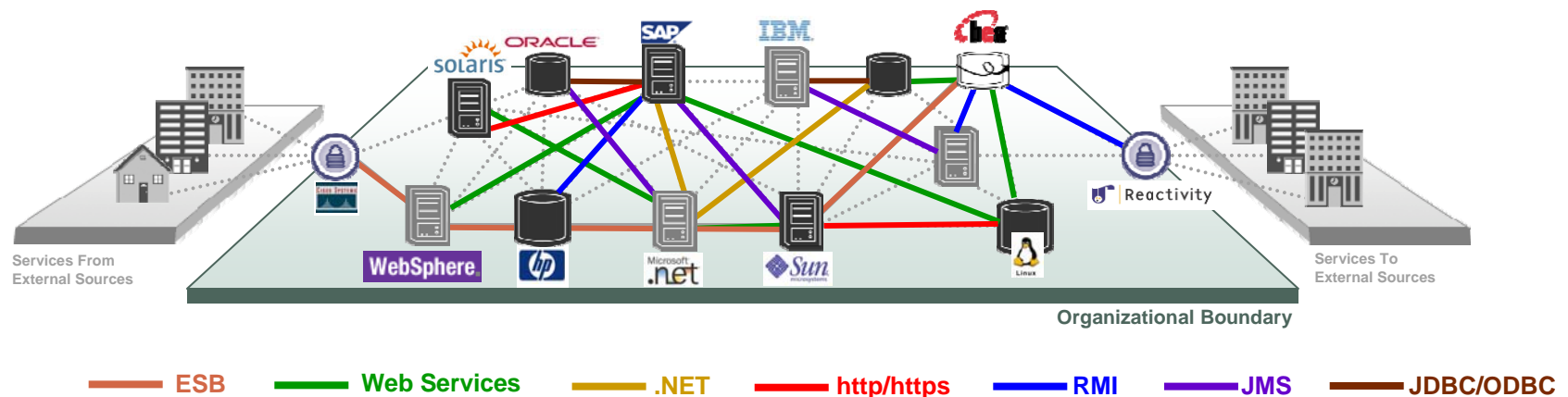
Visibility - Beyond webservice, XML, SOAP for true end to end transaction visibility. Real time for each and every transaction

Management - Service Policy (security, versioning, operations, change). Measure, manage and report on service level agreements

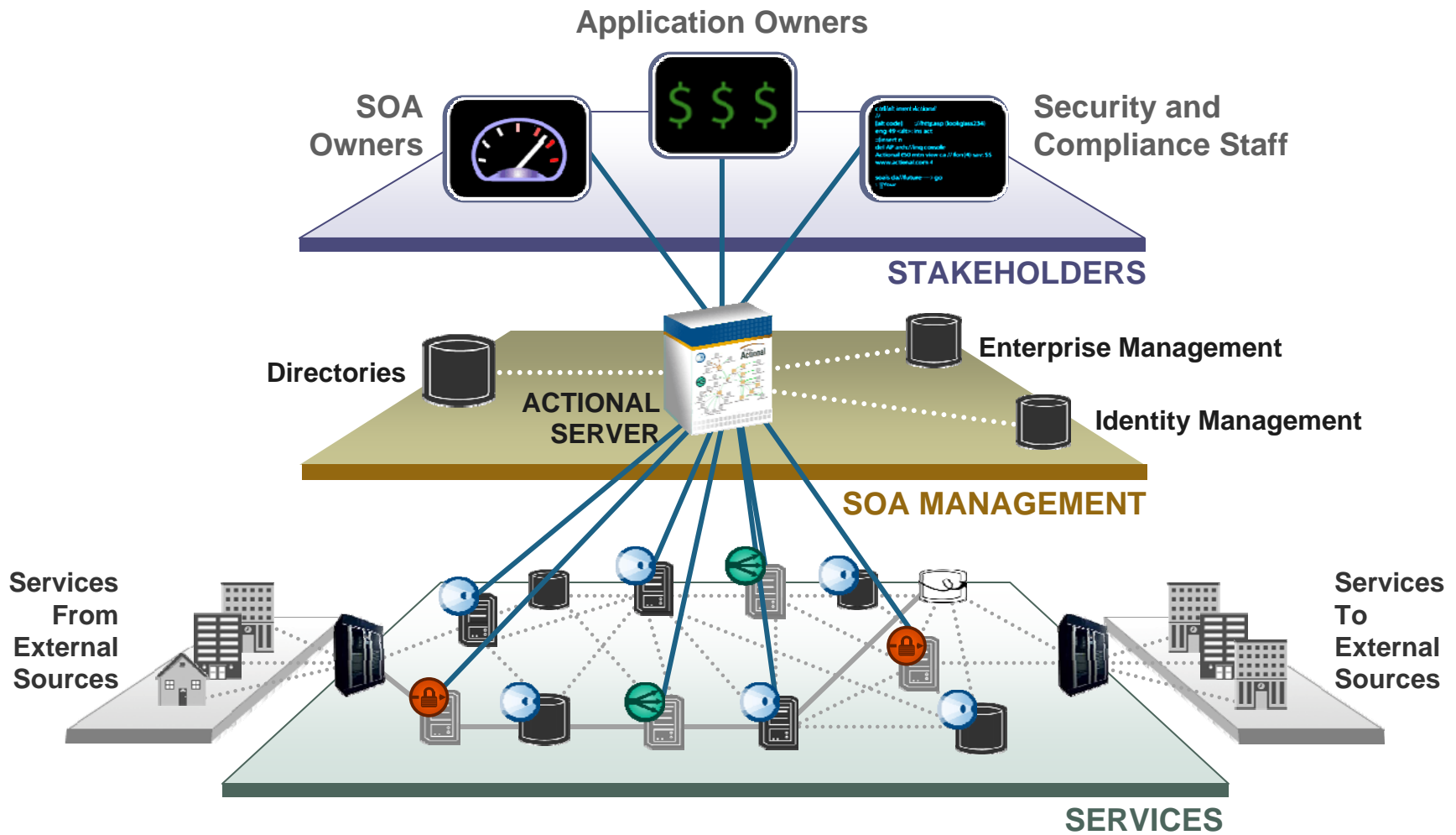
Security - End to end security including last mile. Full CIA (WSS, XML Enc/DSig, SAML, etc...)

Run-Time Governance – Measure, enforce and audit governance policies and rules in run-time environments. Synchronize registry information with real time service metadata.

"Actional provides a far weightier Web Services management capability and toolset for building, securing, and managing a SOA network than its competitors' offerings ... [with] greater control ..."



Actional SOA Management



The Power of Actional

SOA
OPERATIONS



- SOA operations ensures the performance and availability of the end-to-end SOA production environment

CABLEVISION



SERVICE
DELIVERY
OPTIMIZATION



- Service delivery optimization enables visibility and dynamic optimization of the SOA from a business context



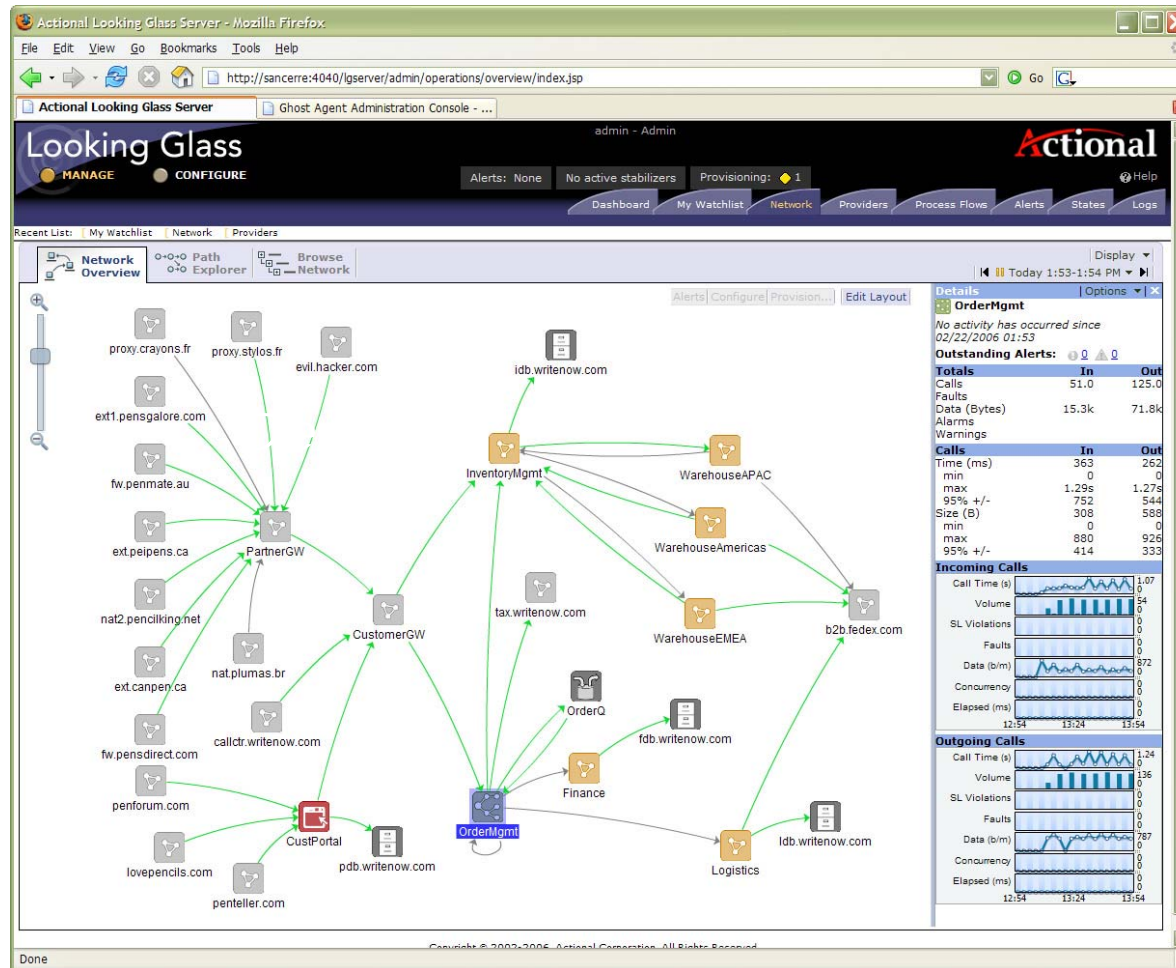
ACTIVE
POLICY
ENFORCEMENT



- Active policy enforcement ensures compliance with security and regulatory policies while reducing costs

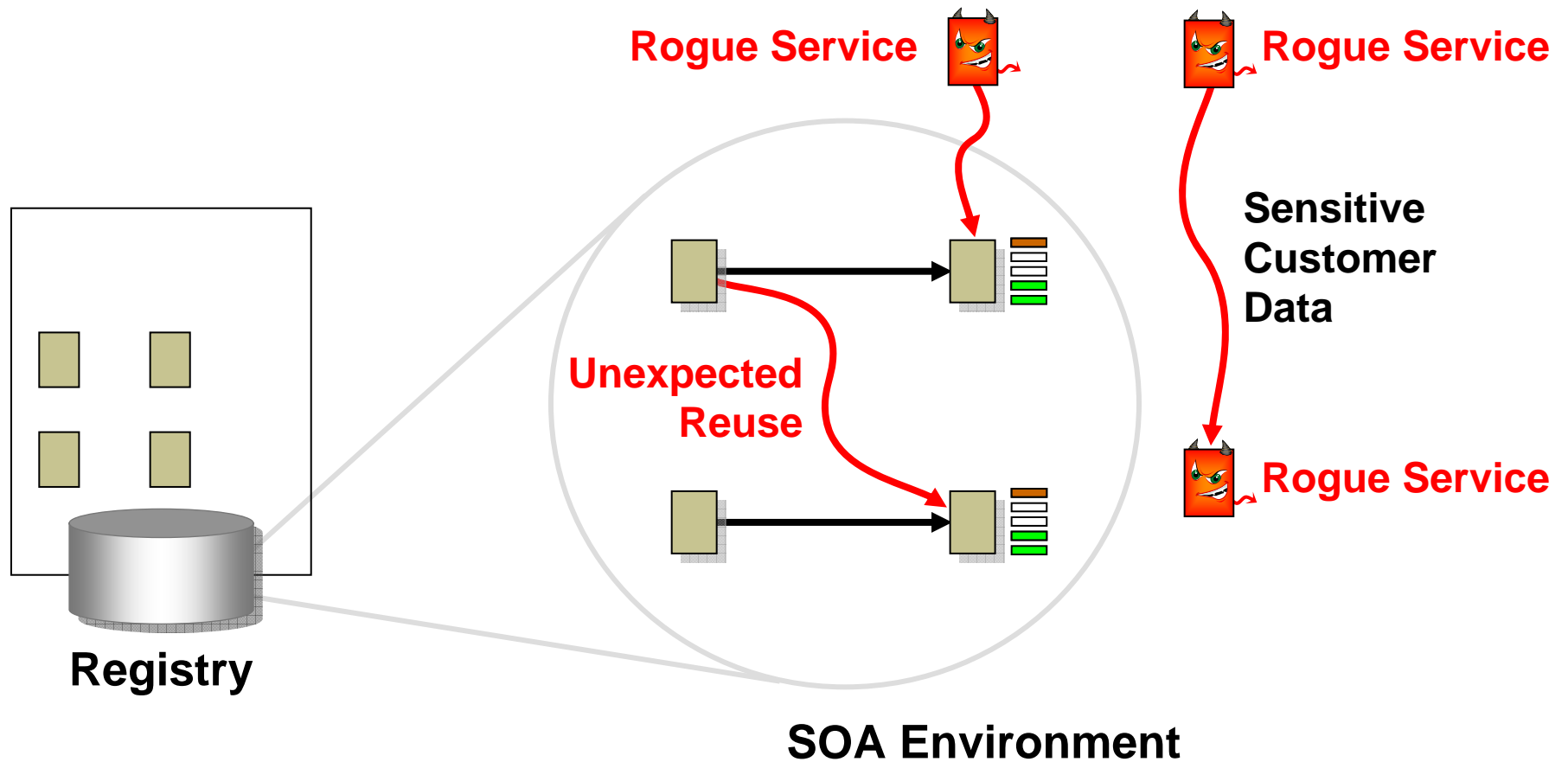


Actional's "Flow Map" Patented Technology



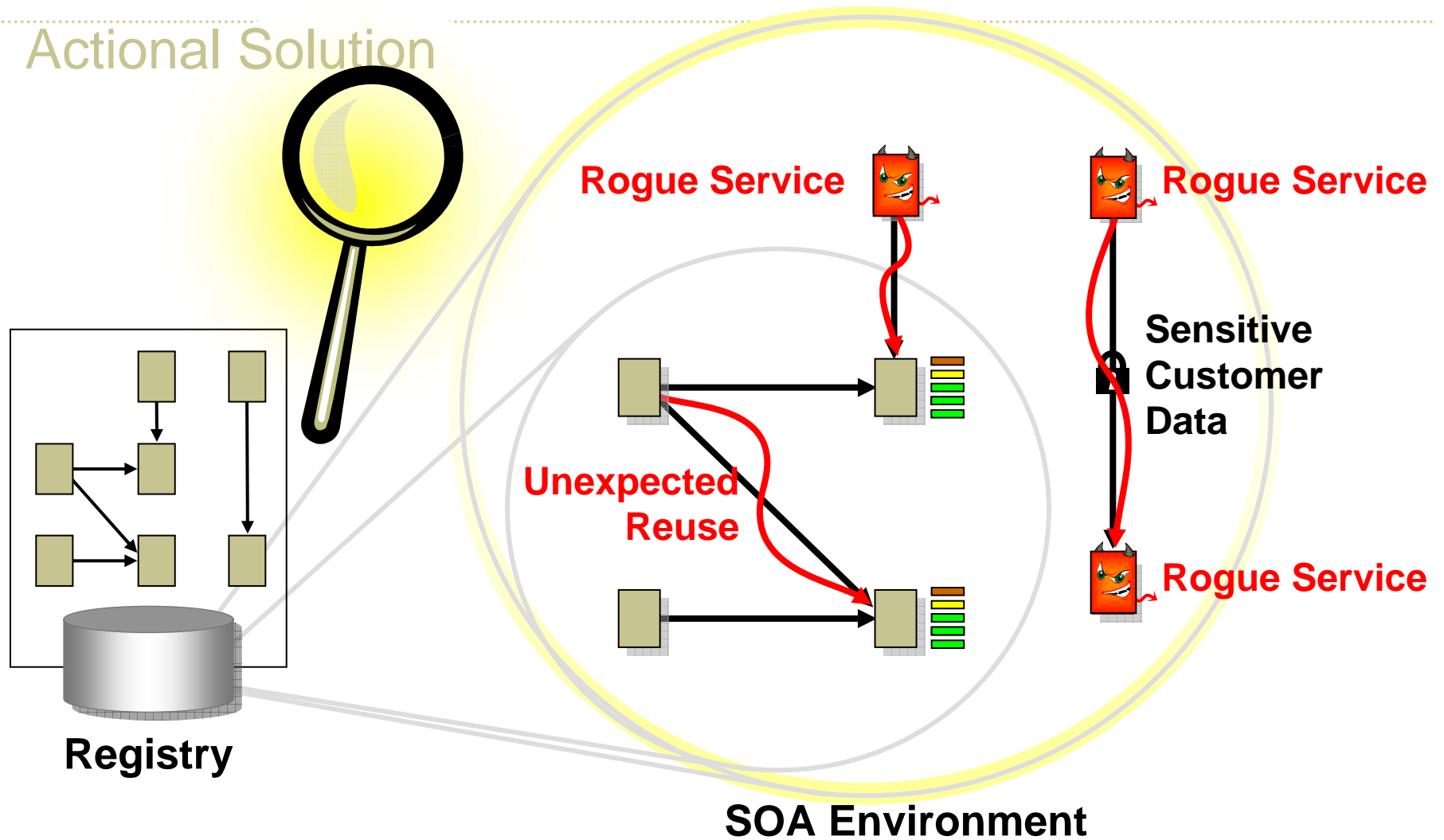
Rogue Services

The Problem



Rogue Services

Actional Solution

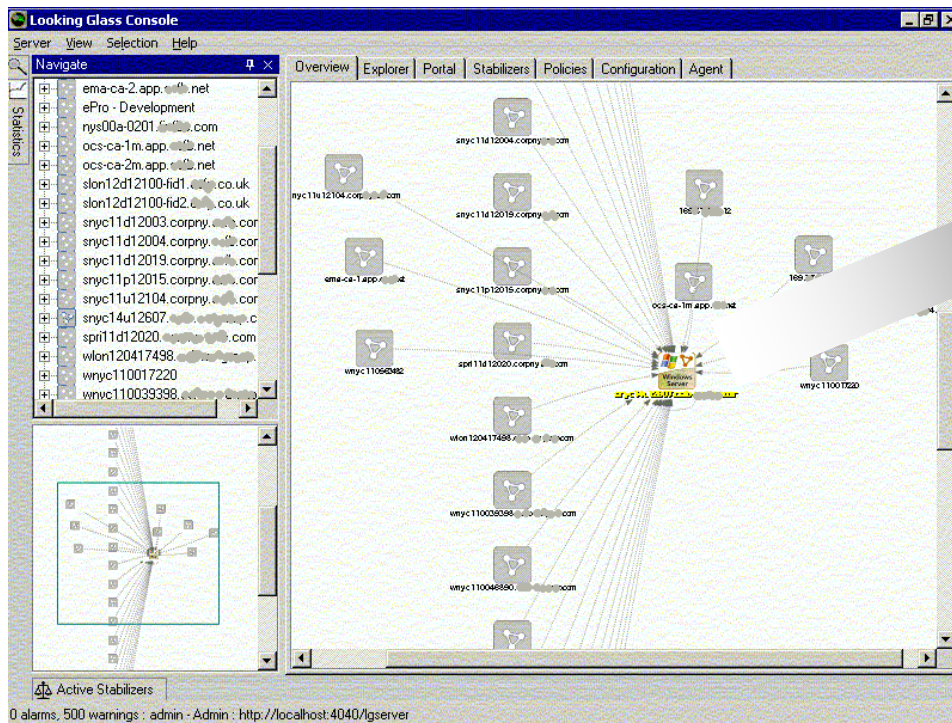


Rogue Services

“We know there are about 5 applications using our service”

“We gave the WSDL to 5 groups, but we think they’ve given it out.”

“At some times of the day, the service gets slow – but we don’t know what’s causing it, and we don’t know who is impacted”



**They thought wrong!
34 apps used
the service.**

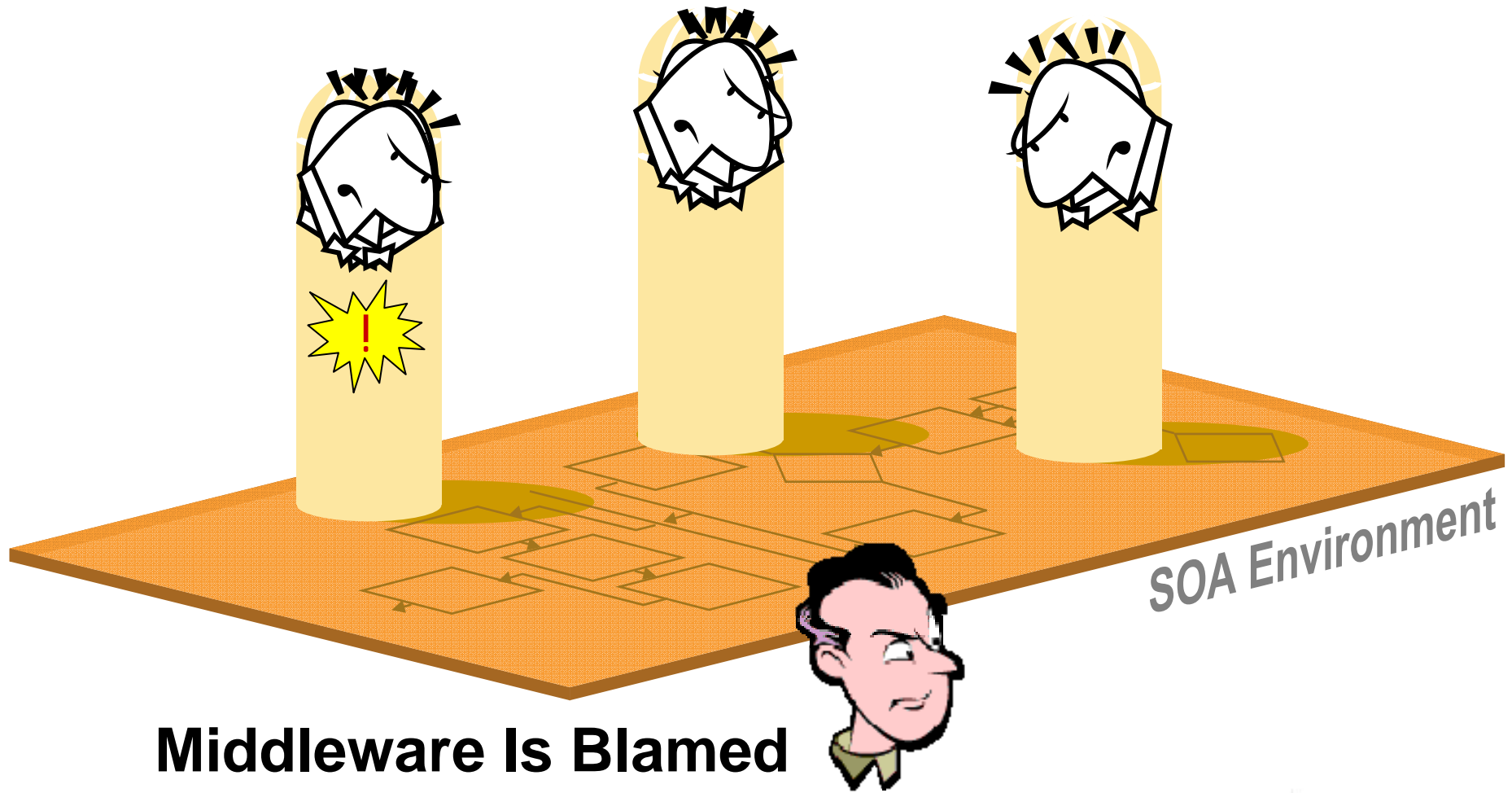
DEMO



Lets Go Back

Root-Cause Analysis

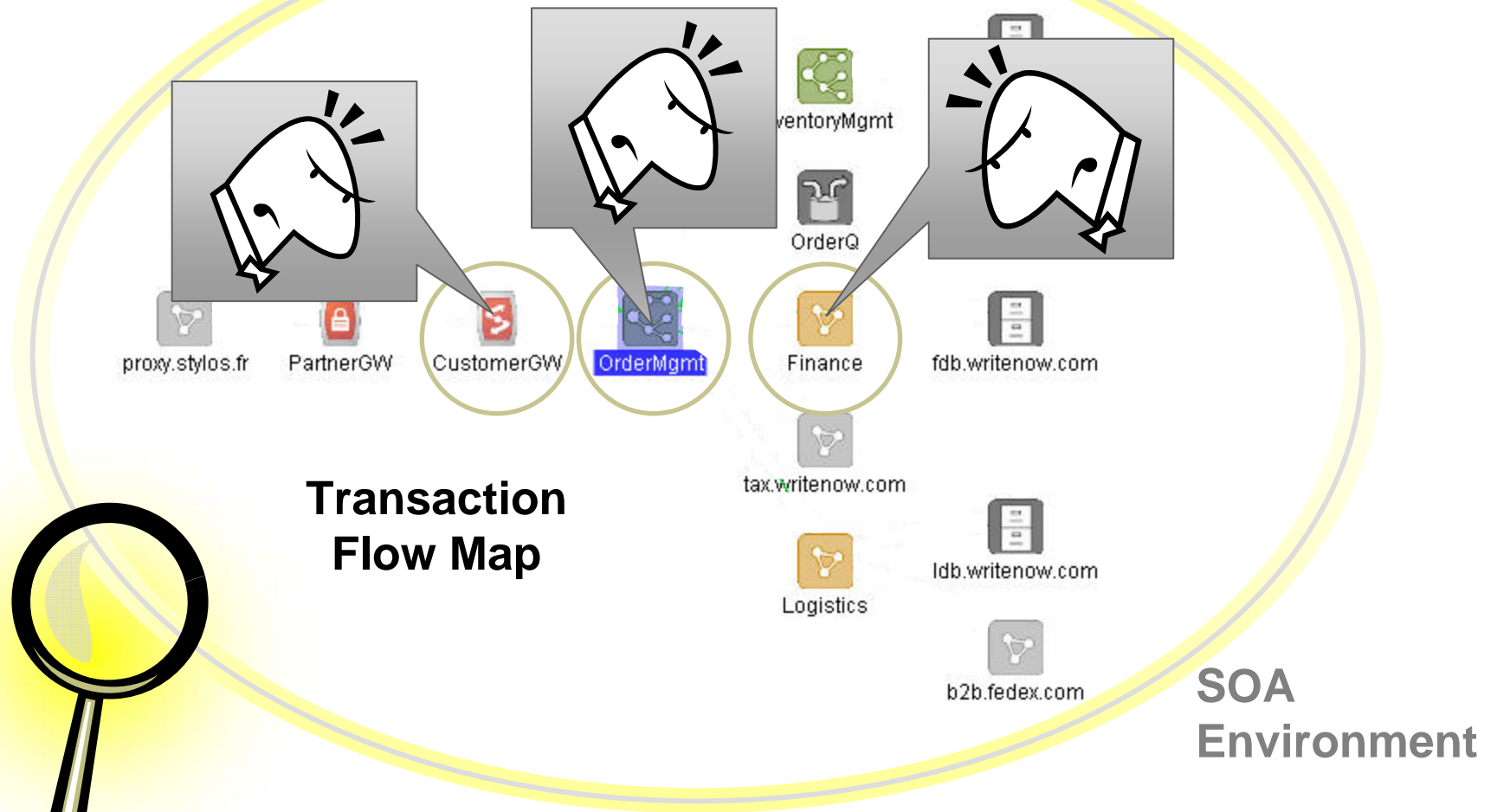
The Problem



Middleware Is Blamed

Root-Cause Analysis

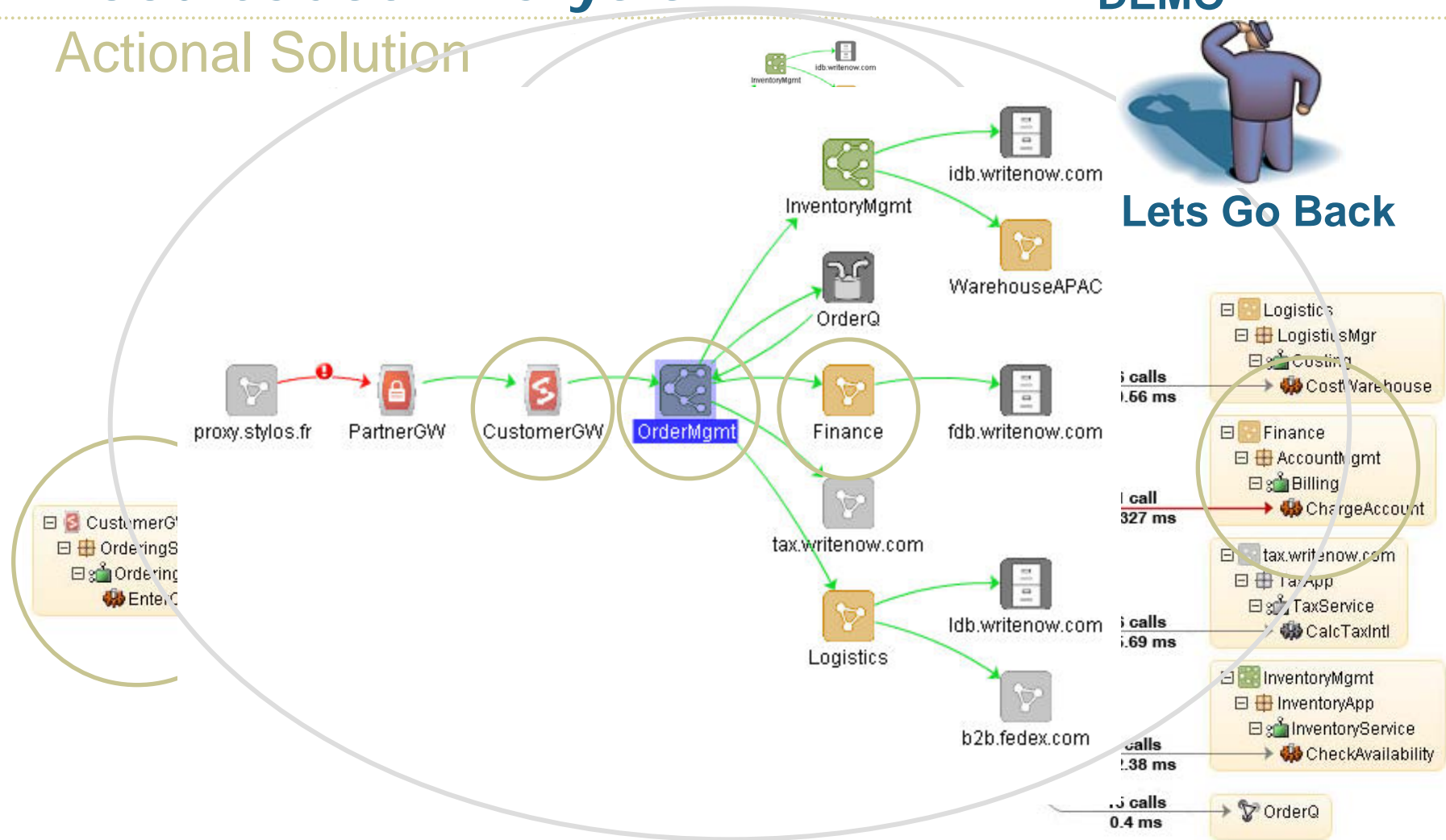
Actional Solution



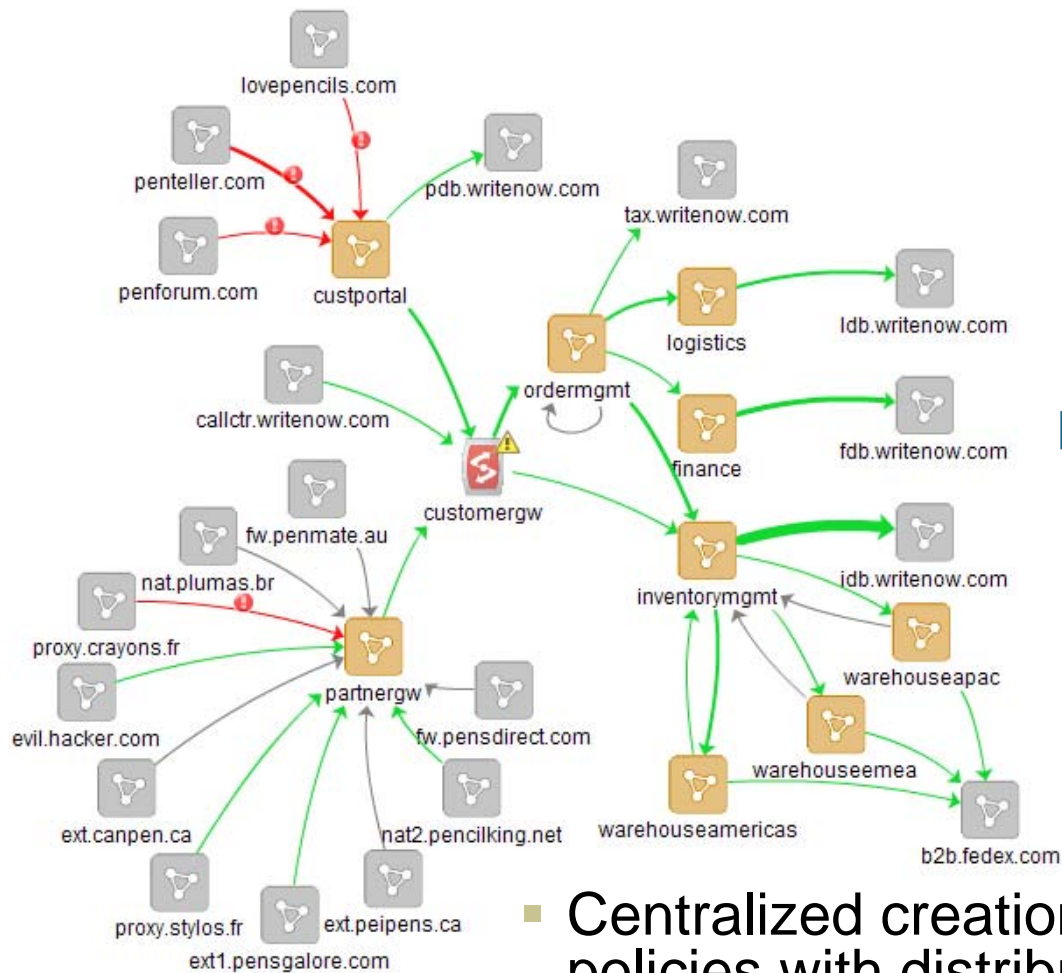
Root-Cause Analysis

Actional Solution

DEMO



Making Active Policy Enforcement Possible



Policy Groups



Operations Managers

DEMO



Lets Go Back



Progress Actional

- Centralized creation and management of policies with distributed enforcement
- Policies can change independent of services

Supported environments for visibility

Application Platforms

- BEA WebLogic
- IBM WebSphere
- JBoss
- Oracle App Server
- Microsoft .NET
- SAP NetWeaver
- Tomcat

Middleware

- CISCO AON
- Reactivity
- Sonic ESB
- IBM WebSphere MQ
- TIBCO EMS
- TIBCO BusinessWorks
- DataPower

Transport

- Axis
- SOAP
- EJB
- JMS
- Servlets (HTTP)
- Jakarta HTTP client
- RMI , JDBC
- JAX-RPC
- ADO.NET 2.0
- Reactivity



SOA Operations



Continuous Service Optimization



Active Policy Enforcement

Why Actional for SOA Management?



Only Actional can automatically detect and control unregistered services



Only Actional can analyze the root cause of *any* policy violation, not just IT exceptions



Only Actional can apply policy by content, business process, or business criteria, vastly simplifying the alignment of IT with business

"Actional's Web services management platform delivers a comprehensive solution to the unique application management challenges commonly faced in enterprises. This combined solution will help customers to rapidly deploy Web services and immediately capitalize on the benefits across their enterprise."

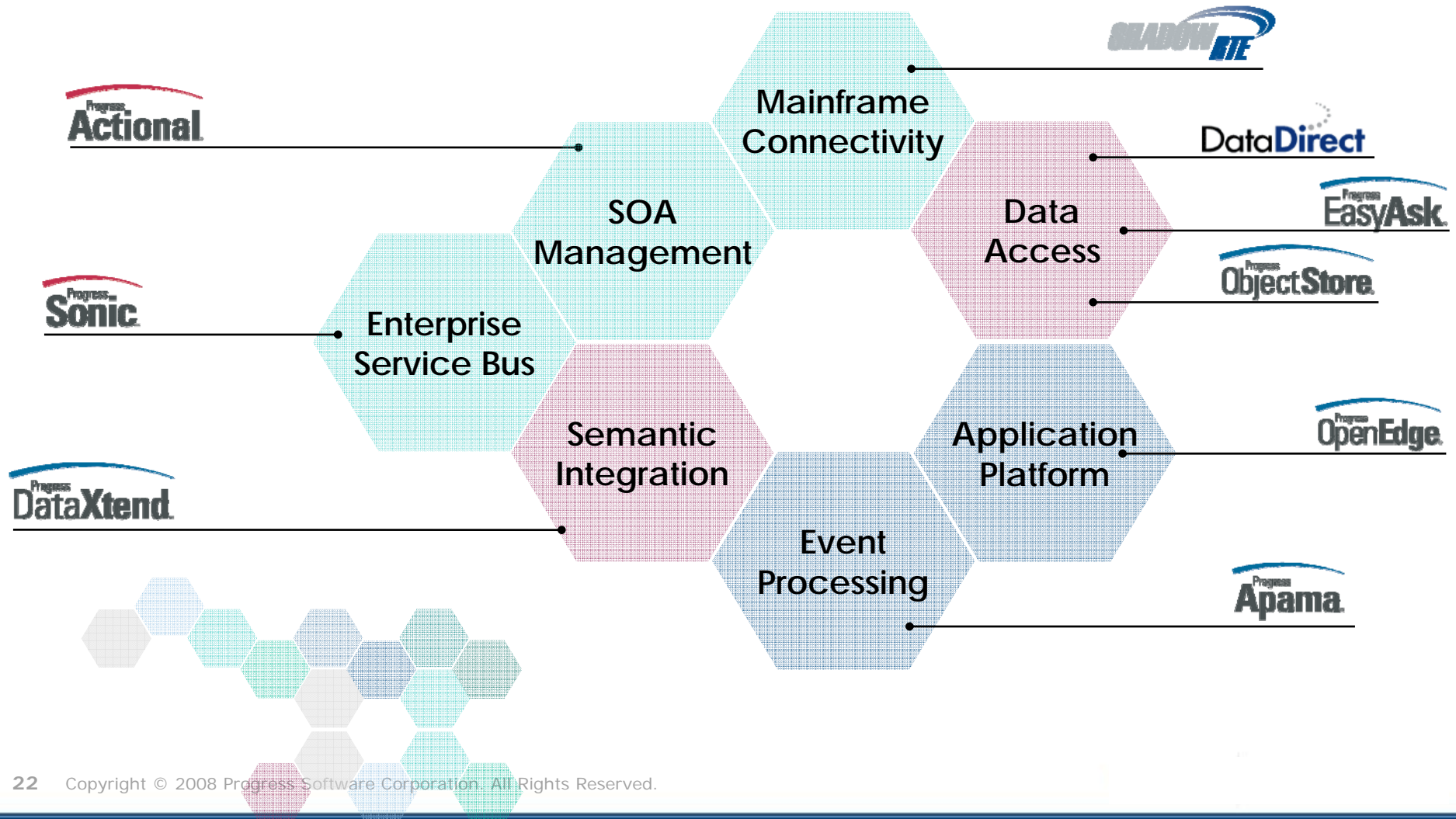
Dan Lewin, Vice President .NET Business Development at Microsoft

Questions?



Progress SOA Product Lineup

Best-in-Class Infrastructure for the Business Challenges of SOA



Further Information

- **Actional Home Page**
 - <http://www.actional.com/>
- **Product Literature**
 - http://www.actional.com/products/product_literature/
- **Free 30-day Evaluation**
 - <http://www.actional.com/products/evaluate-soa-operations/>
- **Mark Miskiman, Senior Solutions Engineer**
 - pmiskima@progress.com
- **Shawn Dawson, Regional Manager**
 - sdawson@progress.com