

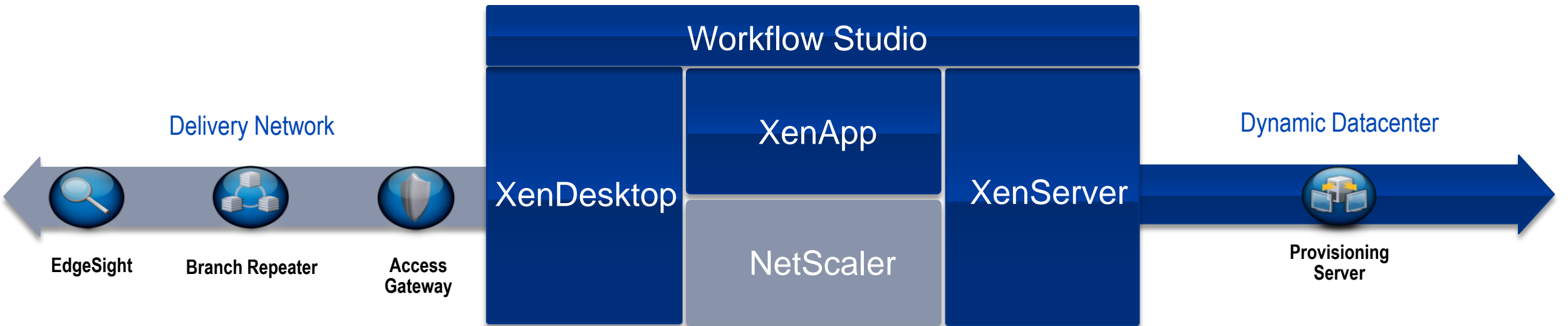


What if Everything Went 5x Faster?

Citrix NetScaler and Branch Repeater

Citrix Delivery Center™

NetScaler & Branch Repeater



Powering the World's Most Popular Web Applications



75%
Of Internet Users





2,000+
Enterprise
Customers

Testing, Certified and Recommended by Leading ISVs

Microsoft[®]


Business Objects[™]

EMC² | **documentum**


bea[™]

Taleo [™]
Talent Drives Performance

ORACLE[®]


Bb[™]
www.blackboard.com

sage

Hyperion[®]

MCKESSON
Empowering Healthcare

 **CERNER**[®]
All Together[™]

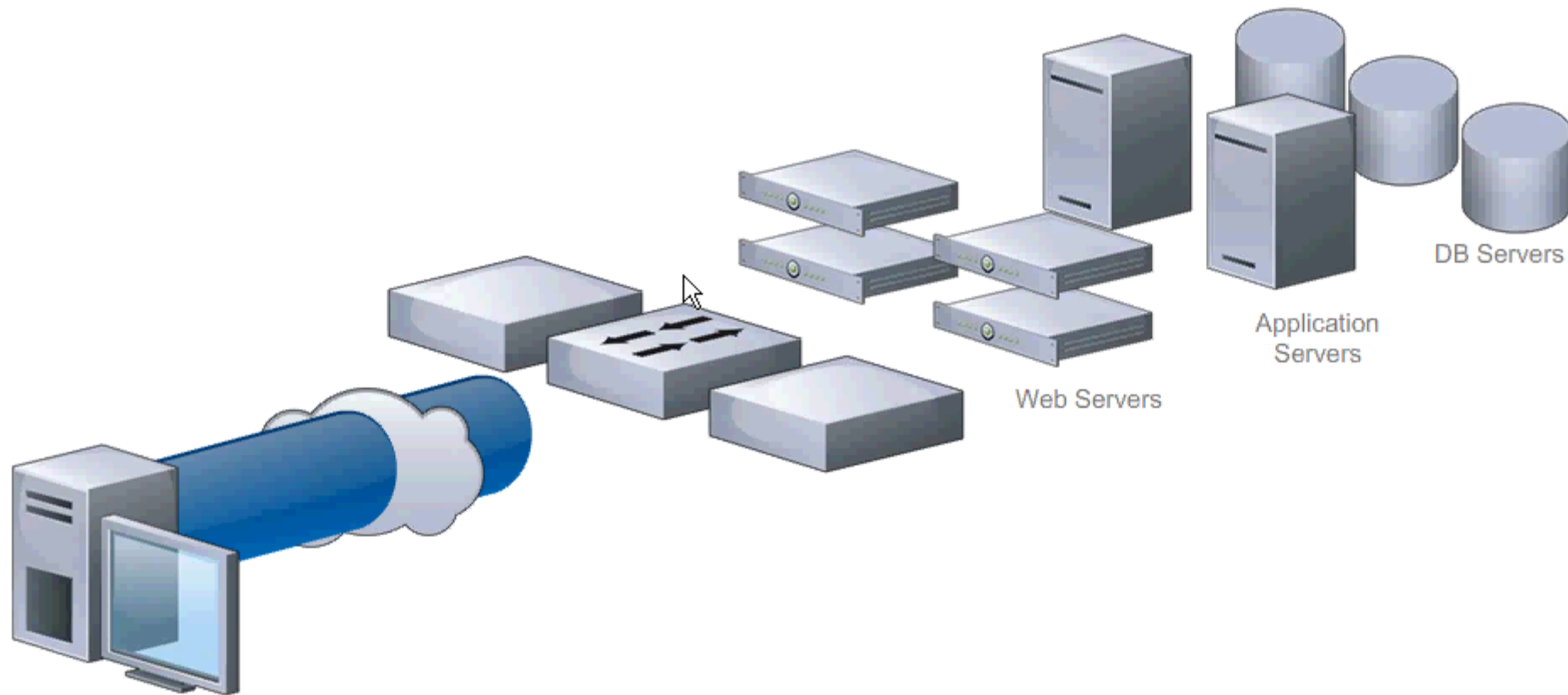
iSOFT
inspired by life


SAP

IBM


ESRI

NetScaler in Action



Result: ✓ Cost-Effective ✓ Simple ✓ Scales

Agenda

Global Availability With Netscaler

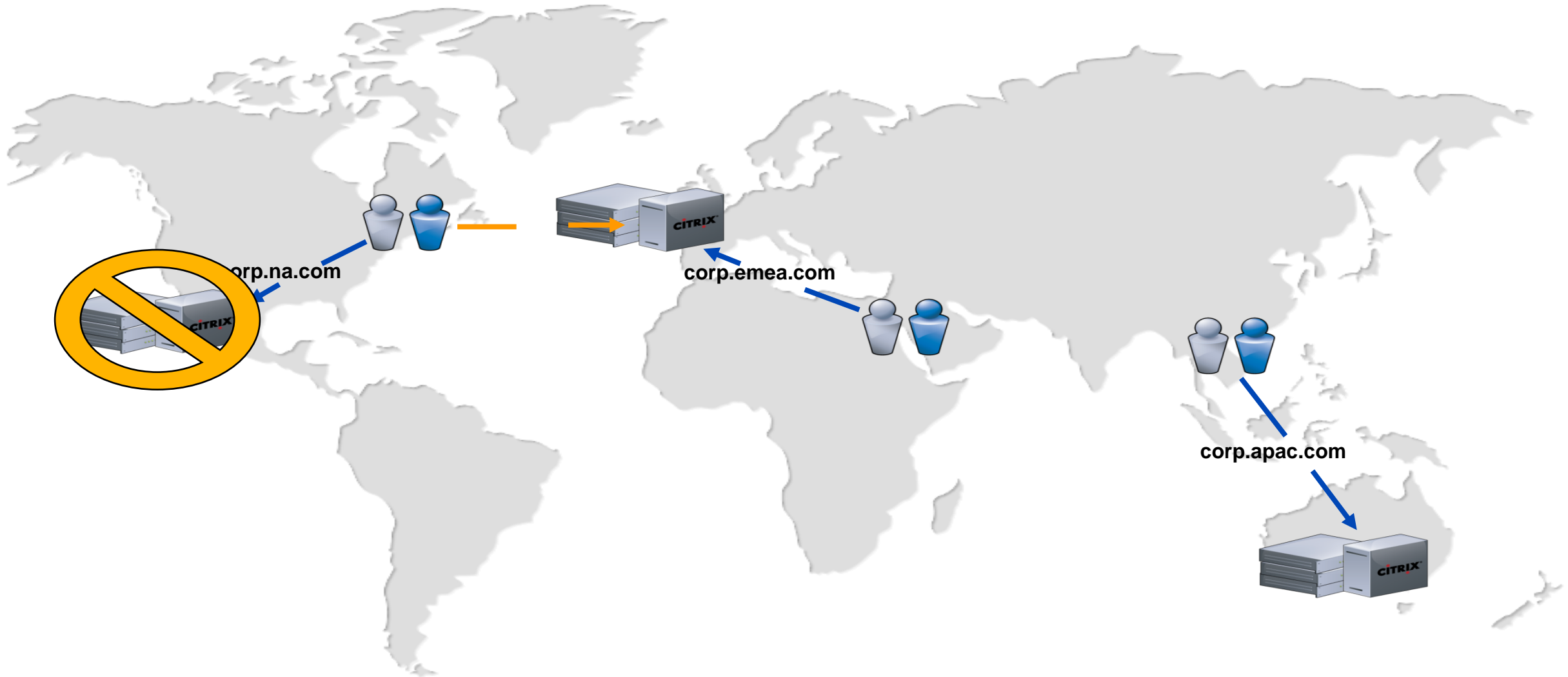
Mitigating Web Attacks with NetScaler

Application Performance Monitoring With Netscaler

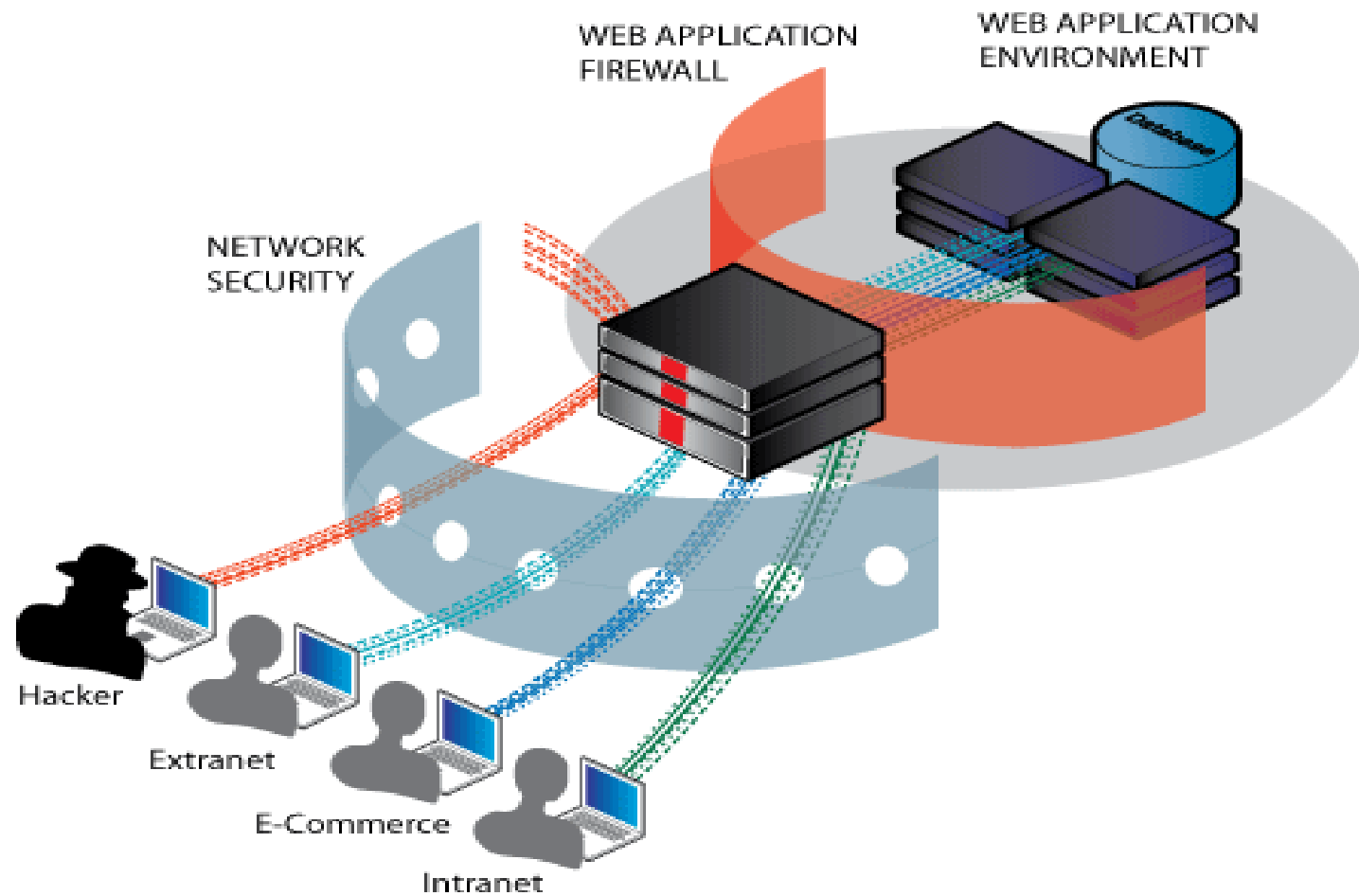
Application Acceleration With Branch Repeater

Global Availability

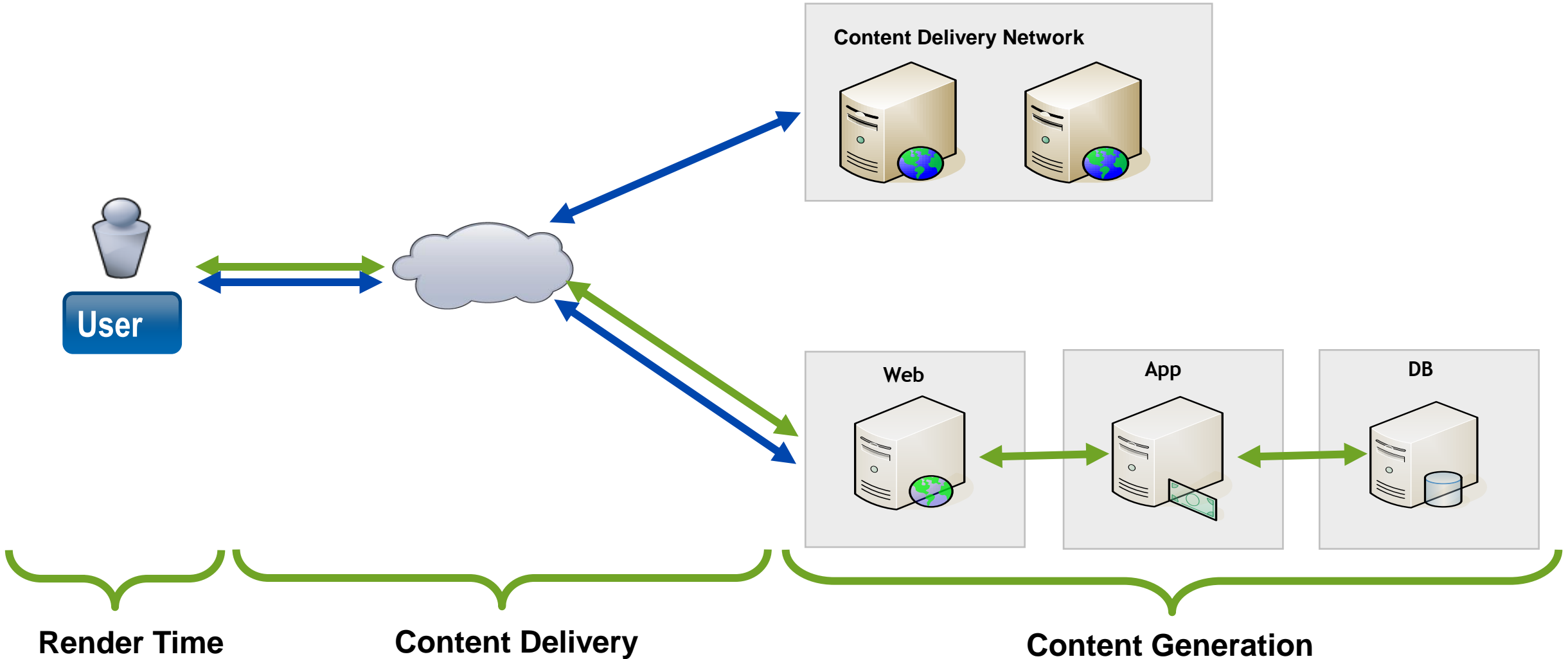
Active-Active, Regional Naming with Dynamic Failover



Deployment Architecture



Response Time Components



Six Facets of NetScaler

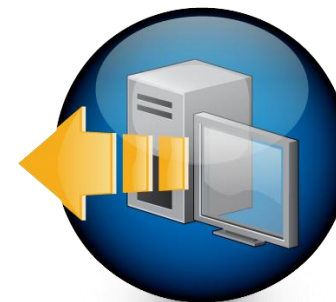


Availability

Seamless failover between servers + sites
Application Health Monitoring



Application Security
Web Application Firewall



Infrastructure Offload
Reducing Web servers by 50%+



Secure Access
Clientless access to Xen

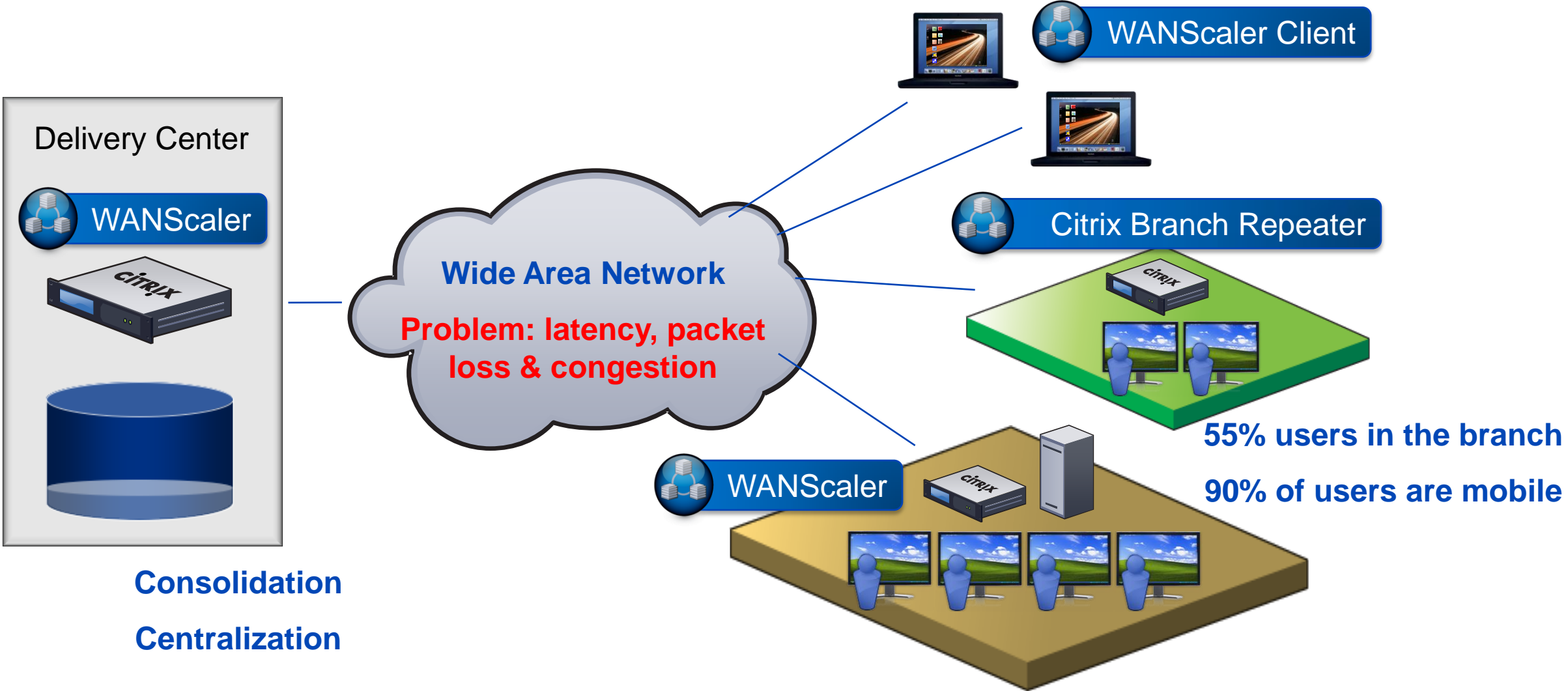


Optimize
Accelerate by 5x or more



User Expectation Management
(or user experience monitoring)

Citrix Branch and Mobile User Solutions



Branch Repeater Value Proposition



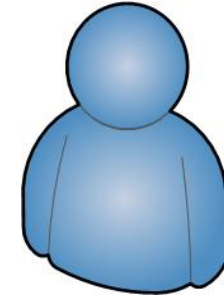
Flow Control

Latency mitigation
Manage app behaviour



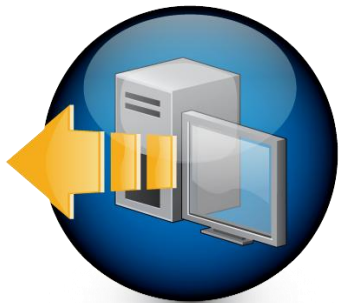
Specific Protocol Optimization

Manages chatty protocols



Software Client

When an appliance won't do
Included in Platinum



Compression

Bit-level de-duplication
Minimizes latency impact



Windows Services

High value, low TCO
Remote application hub



ICA Protection

Guarantees consistency
Priority for interactive bits

Citrix NetScaler Appliances



	7000	9010	10010	12000
Size	1U	2U	2U	2U
Power Supplies	1	2	2	2
Processor	Single	Single	Single	Dual
Memory	1 GB	2GB	4GB	4GB
Network Interface Support	Qty. 6 - 10/100 AND Qty. 2 - 10/100/1000	Qty. 4 - 10/100/1000 OR Qty. 4 – GBit Fiber	Qty. 4 - 10/100/1000 OR Qty. 4 – GBit Fiber	Qty. 8 – 1000MBit SFP Fiber, Copper, 50/50
System Throughput	600 Mbps	3 Gbps	4.8 Gbps	6 Gbps
HTTP Compression Throughput	150 Mbps	400 Mbps	555 Mbps	1.3 Gbps
HTTP Requests per Second	50K	125K	250K	275K
SSL Encrypted Throughput	150 Mbps	500 Mbps	760 Mbps	3 Gbps
SSL Transactions per Second	4400	4400	8800	28,000+

Citrix NetScaler

High-Performance Product Lines



	10010	12000	MPX-15000	MPX-17000
Size	2U	2U	2U	2U
Power Supplies	2	2	2	2
Processor	Single	Dual	Dual (4 cores)	Dual (8 cores)
Memory	4GB	4GB	16GB	32GB
Network Interface Support	4x - 10/100/1000 & 4x - GB Fiber	8x Fiber/Cu GB SFP, or 8x Cu GB SFP; or 4x Fiber & 4x CU SFP; or 2x10GE & 8x10/100/1000	2x 10G Fiber XFP + 8x CU SFP 10/100/1000	4x 10G Fiber XFP or 2x 10G Fiber XFP + 8x CU SFP 10/100/1000
System Throughput	4.8 Gbps	5.5 Gbps	15 Gbps	15 Gbps
HTTP Compression Throughput	555 Mbps	1.3 Gbps	3 Gbps	6 Gbps
HTTP Requests per Second	250K	275K	340K	340K
SSL Encrypted Throughput	760 Mbps	3 Gbps	6 Gbps	6 Gbps
SSL Transactions per Second	8800	28,000	48,000	48,000

Solutions Spanning Target Markets



Application Traffic Management	Application Traffic Management	Application Traffic Management
Secure Access	Application Optimization	Application Optimization
	Secure Access	Application Security
		Click-to-Call
		Secure Access
		Application Performance Monitoring
		WAN Optimization

NetScaler Product Line



		Standard Edition	Enterprise Edition	Platinum Edition
Traffic Management	TCP Optimizations	•	•	•
	SSL Offloading	•	•	•
	ACLs	•	•	•
	L4 Load Balancing	•	•	•
	L7 Content Switching	•	•	•
	Link Load Balancing	•	•	•
	Global Server Load Balancing	Option	•	•
	Access Gateway EE SSL VPN	•	•	•
	Dynamic Routing		•	•
Application Optimization	AppCompress	Option	•	•
	Cache Redirection		•	•
	AppCache		Option	•
Application Visibility	Edgesight for NetScaler		Option	•
Application Security	L4 DoS	•	•	•
	Content Filtering	•	•	•
	Priority Queuing		•	•
	Surge Protection		•	•
	L7 DoS		•	•
	NetScaler Application Firewall		Option	•
	EasyCall (100 CCU per NetScaler)			•
	WANScaler (100 CCU per NetScaler)			•
	Access Gateway (100 CCU per NetScaler)			•

Compression Benefit Report

*URL →

RESULTS

Email results to:

Size Reduction 73%

Speed Improvement 3.8X

Download Size (bytes)	Uncompressed	Compressed
	25,494	6,697

ESTIMATED DOWNLOAD TIME (seconds)

	Uncompressed	Compressed	Time Comparison
Modem 33.6Kbps	6.070	1.595	
ISDN 128Kbps	1.593	0.419	
DSL/Cable 512Kbps	0.398	0.105	
T1 1.5Mbps	0.014	0.004	

<http://www.hqfastapps.com/><http://angdemo.citrix.com>


Web App Acceleration Center

This resource center is designed to help professionals like you improve your network and optimize app delivery. Whether facing the demands of a highly distributed organization or evolving your infrastructure to keep up with user needs, you'll find information to address your biggest network challenges and ensure app delivery with high availability, performance, and security.

INFRASTRUCTURE SOLUTIONS APPLICATION SOLUTIONS CUSTOMERS RESOURCES PRODUCTS

Infrastructure Solutions

- Next-Gen Load Balancing
- Application Acceleration
- Data Center Optimization
- Branch Office
- Application Security
- Disaster Recovery / Business Continuity

With the requirements of today's complex organization, the right network infrastructure is critical to reliably deliver apps to any user, anytime, anywhere. Discover the latest solutions that will ensure your success. [MORE >>](#)

Application Solutions

- Microsoft SharePoint
- Oracle E-Business
- PeopleSoft
- JD Edwards
- EMC Documentum
- Hyperion
- SAP
- Siebel
- ESRI

HQ-fast Web applications used to only be available at headquarters. But now you can deliver any application up to 5x faster, plus maximize availability and app security. [MORE >>](#)

Citrix at EPIC Technology Day October 2008

- **12:00pm "Turn Your Datacenter Into a Delivery Center"**
(David Wright, Vice President Citrix Canada)
Keynote Lunch
- **2:00pm "Stop Deploying. Start Delivering."**
(Paul Wilson, XenDesktop Subject Matter Expert)
Embassy F Room
- **Todd Swanek, Field Sales Manager,**
todd.swanek@citrix.com, 780-994-0931

The image features the Citrix logo, which consists of the word "CITRIX" in a bold, black, sans-serif font. The logo is centered horizontally and is set against a dark blue background. Behind the logo is a bright, glowing light source that creates a starburst effect with multiple rays of light extending outwards. The light is a vibrant cyan or light blue color, contrasting sharply with the dark background. The overall composition is clean and modern, emphasizing the brand's identity.

CITRIX